

JUNGLE

[BDE Designation]

**FY22 UMT METL
Training Planner**



Table of Contents

- TAB A – References
- TAB B – BDE Task Org and Personnel
- TAB C – BDE UMT Mission Statement
- TAB D – Training Guidance from Higher
- TAB E – UMT METL Collective Tasks / Assessments
- TAB F – Coordinating METL Tasks / Assessments
- TAB G – FY22 Training Calendar

- TAB H – Task Reports for BDE UMT Training
- TAB I – BDE CPRT Tracking Roster

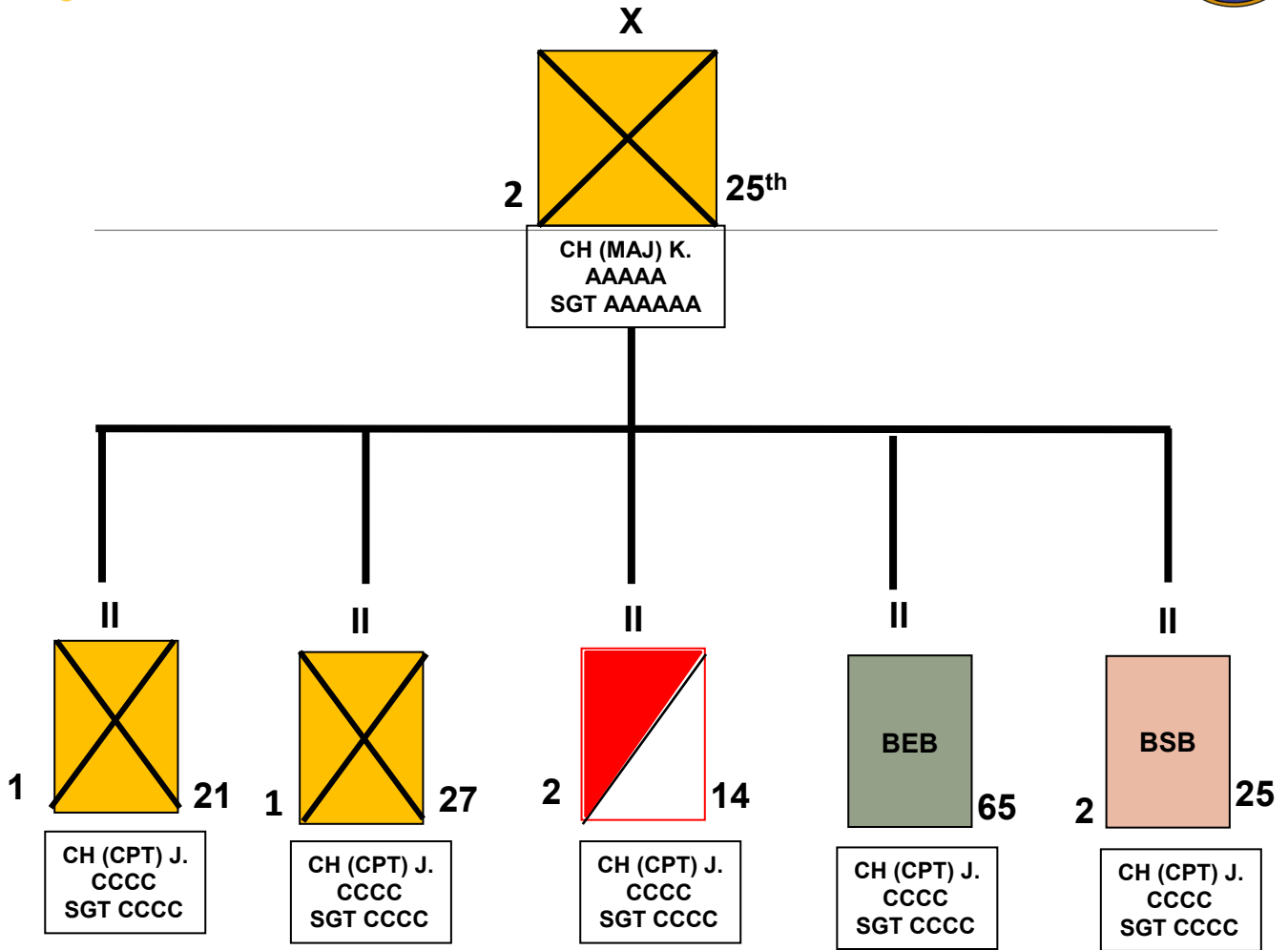


References

- AR 165-1 Chaplain Corps Activities
 - FM 1-05 Religious Support Operations
 - ADP 3-0 Unified Land Operations
 - FM 7-15 The Army Universal Task List (Change No.10)
 - ADP 7-0 Training Units and Developing Leaders
 - ATP 1-05.01 Religious Support and the Operations Process
-



TAB B XX BDE Task Organization





TAB C
Unit Ministry Team Mission

[BDE UMT Mission here]



FY22 UMT Training Guidance



**[Insert all pertinent
DACH, USARPAC,
I Corps, USARHAW,
and DIV Training
Guidance]**



TAB F

Coordinating METL Tasks and Assessment

[Collective Task #1 (Task #)]

56A Coordinating Tasks	T	P	U	Notes
[Insert 56ATask that supports Collective Task (Task #)]				
[Insert 56ATask that supports Collective Task (Task #)]				
[Insert 56ATask that supports Collective Task (Task #)]				
[Insert 56ATask that supports Collective Task (Task #)]				
56M Coordinating Tasks				
[Insert 56MTask that supports Collective Task (Task #)]				
[Insert 56MTask that supports Collective Task (Task #)]				
[Insert 56MTask that supports Collective Task (Task #)]				
[Insert 56MTask that supports Collective Task (Task #)]				
Overall				

Legend

T Trained – 81 -100%

P Needs Practice – 60 - 80%

U Untrained – 59% - Below



TAB E

UMT METL Collective Tasks and Assessments

Collective Tasks	T	P	U	Notes
[Collective Task Name] (Task #)				
[Collective Task Name] (Task #)				
[Collective Task Name] (Task #)				
[Collective Task Name] (Task #)				
Overall				

Legend

- T Trained – 81 -100%
- P Practiced – 60 - 80%
- U Untrained – 59% - Below



TAB F

Coordinating METL Tasks and Assessment

[Collective Task #2 (Task #)]

56A Coordinating Tasks	T	P	U	Notes
[Insert 56ATask that supports Collective Task (Task #)]				
[Insert 56ATask that supports Collective Task (Task #)]				
[Insert 56ATask that supports Collective Task (Task #)]				
[Insert 56ATask that supports Collective Task (Task #)]				
56M Coordinating Tasks				
[Insert 56MTask that supports Collective Task (Task #)]				
[Insert 56MTask that supports Collective Task (Task #)]				
[Insert 56MTask that supports Collective Task (Task #)]				
[Insert 56MTask that supports Collective Task (Task #)]				
Overall				

Legend

T Trained – 81 -100%

P Needs Practice – 60 - 80%

U Untrained – 59% - Below



TAB F

Coordinating METL Tasks and Assessment

[Collective Task #4 (Task #)]

56A Coordinating Tasks	T	P	U	Notes
[Insert 56ATask that supports Collective Task (Task #)]				
[Insert 56ATask that supports Collective Task (Task #)]				
[Insert 56ATask that supports Collective Task (Task #)]				
[Insert 56ATask that supports Collective Task (Task #)]				
56M Coordinating Tasks				
[Insert 56MTask that supports Collective Task (Task #)]				
[Insert 56MTask that supports Collective Task (Task #)]				
[Insert 56MTask that supports Collective Task (Task #)]				
[Insert 56MTask that supports Collective Task (Task #)]				
Overall				

Legend

T Trained – 81 -100%

P Needs Practice– 60 - 80%

U Untrained – 59% - Below






TAB F

Coordinating METL Tasks and Assessment

[Collective Task #3 (Task #)]

56A Coordinating Tasks	T	P	U	Notes
[Insert 56ATask that supports Collective Task (Task #)]				
[Insert 56ATask that supports Collective Task (Task #)]				
[Insert 56ATask that supports Collective Task (Task #)]				
[Insert 56ATask that supports Collective Task (Task #)]				
56M Coordinating Tasks				
[Insert 56MTask that supports Collective Task (Task #)]				
[Insert 56MTask that supports Collective Task (Task #)]				
[Insert 56MTask that supports Collective Task (Task #)]				
[Insert 56MTask that supports Collective Task (Task #)]				
Overall				

Legend

-  Trained – 81 -100%
-  Practiced – 60 - 80%
-  Untrained – 59% - Below






TAB F

Coordinating METL Tasks and Assessment

[Collective Task #5 (Task #)]

56A Coordinating Tasks	T	P	U	Notes
[Insert 56ATask that supports Collective Task (Task #)]				
[Insert 56ATask that supports Collective Task (Task #)]				
[Insert 56ATask that supports Collective Task (Task #)]				
[Insert 56ATask that supports Collective Task (Task #)]				
56M Coordinating Tasks				
[Insert 56MTask that supports Collective Task (Task #)]				
[Insert 56MTask that supports Collective Task (Task #)]				
[Insert 56MTask that supports Collective Task (Task #)]				
[Insert 56MTask that supports Collective Task (Task #)]				
Overall				

Legend

-  Trained – 81 -100%
-  Practiced – 60 - 80%
-  Untrained – 59% - Below



FY 22 UMT Training Calendar





**[Insert Annual
Training Excel
Spreadsheet
Calendar here]**



Task Reports for BDE UMT Training



[Insert the task reports for each task being trained in the FY]



UMT Training Planner

Task / Task #:	Write the Religious Support Annex for the TACSOP (805D-211-6126)
Standard:	Develop a TACSOP that provides TTPs for providing RS for the BN mission IAW FM 1-05.
Training Date:	
Trainer:	CH (MAJ) XXXXX, SSG YYYYYYY
Location:	Soldier's Chapel (Fellowship Hall)
Agenda:	0930-0940 – Devotion (CH (CPT) AAAAA) 0940-1030 – Training (CH (MAJ) XXXXX) 1030-1040 – Break 1040-1115 – Practical Exercise 1115-1125 – Evaluation / Check on learning 1125-1130 – AAR and wrap-up 1130-1200 – Retrain (if necessary) 1200-1300 – Lunch
Training Materials Req:	1 – dry erase board with markers, 1 – box pens, FM 1-05, PE scenario, Sample OPORD
Task Report:	Attached to training planner. Pulled from Central Army Registry (CAR)
Coordinating Instructions:	N/A